

Whom should I contact if...



...an individual presents at our agency / organization, and it is known that the person receives OPWDD services, but they are unsure of who their Care Manager is?

Your response: Call DDRO with individual information to get CCO information (See the DDRO Regional Map and contact list below and/or visit https://opwdd.ny.gov/opwdd_contacts/ddro).

Sunmount: (518) 359-3311
Capital District: (518) 388-0431
Taconic/Poughkeepsie: (845) 473-5050
Hudson Valley/Thiells: (845) 947-6100
Bernard Fineson/Queens: (718) 217-5890

Brooklyn: (718) 642-6000
Metro/Manhattan: (646) 766-3222
Bronx: (718) 430-0885
Staten Island: (718) 983-5233
Long Island: (631) 434-6100



...an individual presents at our agency / organization and they indicate they do not receive OPWDD services, but would benefit from them?

Your response: Connect the individual with the CDNY central point of intake to start the process - who then routes to the regional intake coordinator. If they have never been linked with OPWDD, they may have to go through the eligibility process first. **(See the CDNY regional intake map and contacts below).**



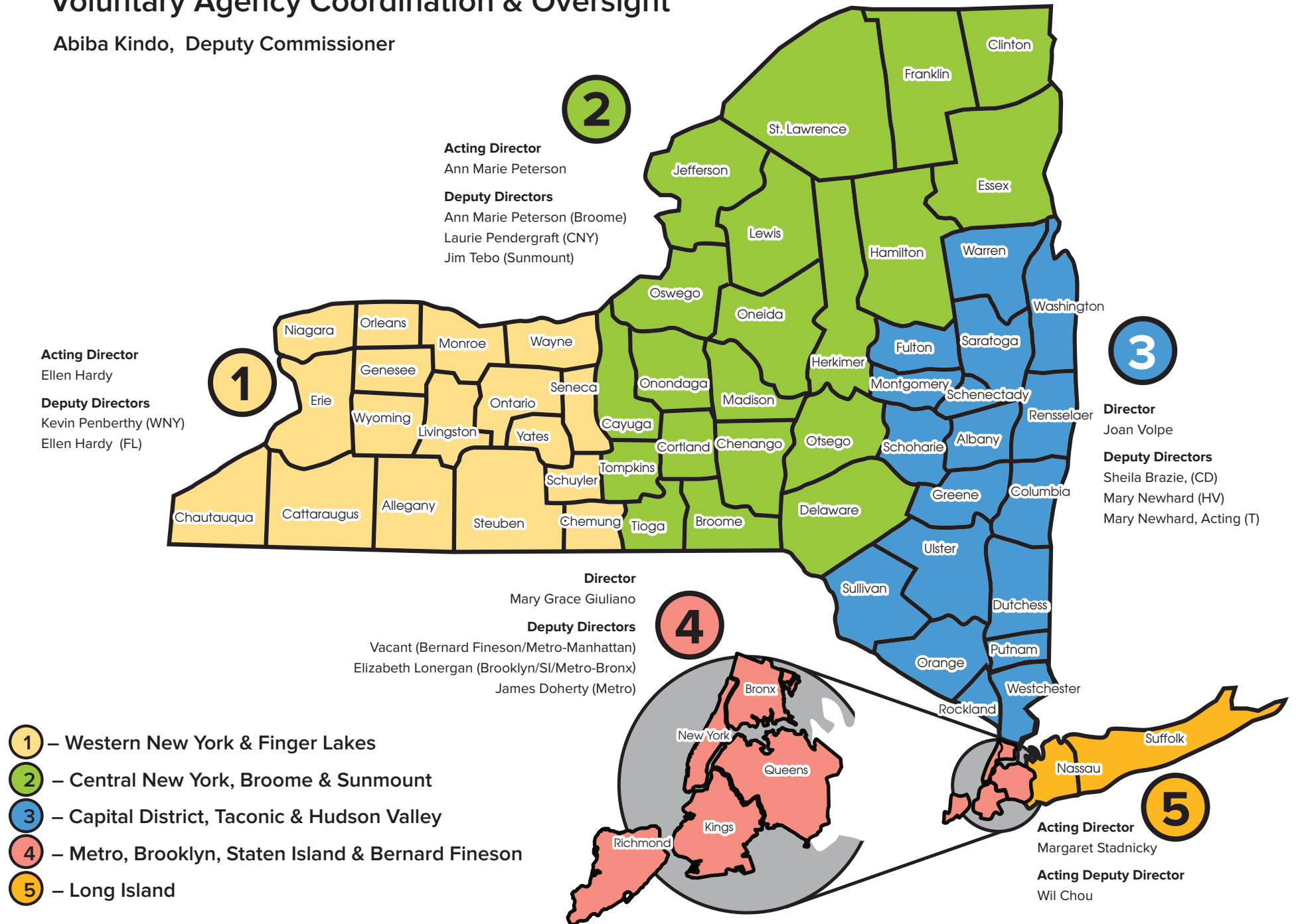
... an individual presents at our agency / organization and they know the CCO they are associated with but do not remember their Care Manager's name?

Your response: If the individual is associated with Care Design NY, call the CDNY main # at (518) 235-1888.

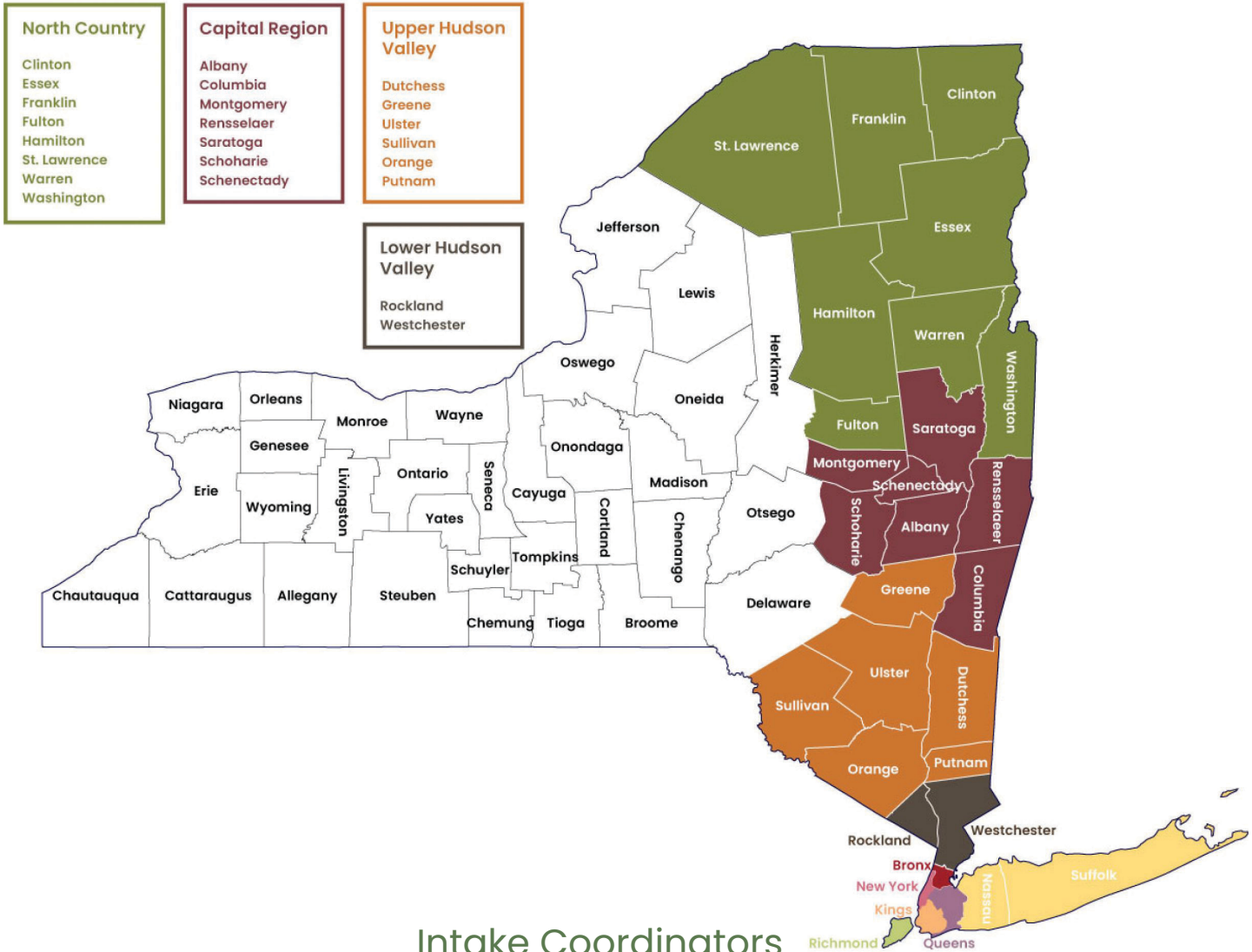
5 Developmental Disabilities Regional Offices

Voluntary Agency Coordination & Oversight

Abiba Kindo, Deputy Commissioner



Intake Regional Map



Intake Coordinators

Director of Intake: Dyonie Torres
 (646) 491-6497 x201319
 dtorres@caresignny.org

North Country: Ashley Provost
 (518) 219-0007 x701029
 aprovest@caresignny.org

Capital Region: Barbara Kirby
 (518) 235-1888 x101826
 bkirby@caresignny.org

Upper Hudson Valley: Jean Dabenigo-Kelly
 (518) 816-3724
 jdabenigo-kelly@caresignny.org

Lower Hudson Valley: Cindy Abreu
 (518) 948-9099
 cabreu@caresignny.org

Brooklyn: Luz Obando
 (347) 227-0817 x401039
 lobando@caresignny.org

Bronx: Kelly Rios
 (646) 491-6497 x200029
 krios@caresignny.org

Queens: Peter Coleman
 (646) 491-6497 x200013
 pcoleman@caresignny.org

Manhattan/Staten Island: Todd Brilliant
 (646) 491-6497 x202018
 tbrilliant@caresignny.org

Long Island: Simone Chung
 (518) 903-9402
 chung@caresignny.org